

Assembly Instructions

SIDE LADDER SPACECLIMB

FOR VW T5, T6, T6.1



Thank you for purchasing your SpaceClimb!

Let's get it mounted on your vehicle!
Please read these instructions carefully
before starting the installation and
before using the product.

It's best to start by sorting all parts,
screws, and washers by size — this will
make the installation process much easier.

Required Tools



1x Allen key size 6



1x Allen key size 5



1x Wrench size 13



1x Wrench size 10

Assembly Time



approx. 30-60 minutes



1. Mounting the Rungs



Figure 1

Attach the rungs using M8×16 pan head screws. On the inside, use a washer, spring lock washer, and nut for each connection. Tighten all screws securely. (See figure 1)

2. Connecting Upper and Lower Sections

Attach the upper section (see figure 2) to the two lower sections using M8×20 screws. Do not fully tighten the screws yet to allow for fine adjustment later.



Figure 2

3. Install Reinforcement Bracket

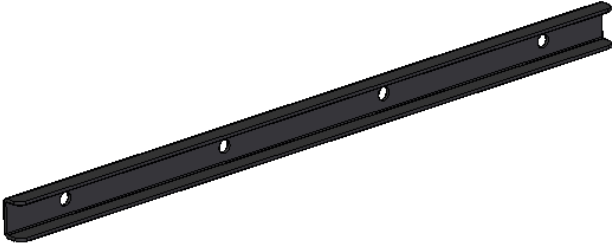


Figure 3

The reinforcement shown in image 3 is mounted on the back of the module to which the ladder will be attached. Use M8×16 pan head screws for installation.

Important: The two holes directly above the wheel arch must remain unused.

4. Mount the Ladder



Figure 4

Position the ladder onto the module using M8×25 screws, spring lock washers, and washers, and screw them in loosely at first. The two threaded plates shown in figure 4 are inserted into the reinforcement.

5. Align the Ladder



Figure 5

Align the ladder centrally (see figure 5) above the wheel arch. Then tighten all screws on the upper bracket.

6. Secure the Bracket at the Wheel Arch

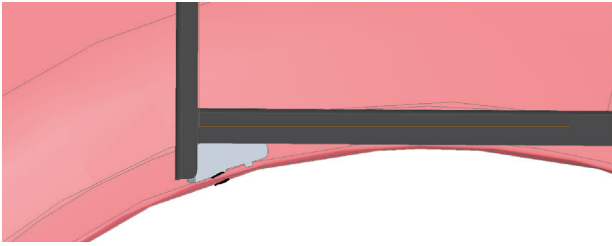


Figure 6

Align the lower brackets at the wheel arch so that they sit flush and are positioned approximately 2 mm above the lower edge of the wheel arch (see figure 6). Then tighten all brackets securely.

7. Install Rubber Pads and Clamps



Figure 7

Insert the rubber pads as shown in figure 7 and position the clamps around the wheel arch. Fasten the clamps using M6×18 screws and tighten them securely.

This completes the installation and assembly. Make sure to tighten all screws securely so that your SpaceClimb is safely and firmly mounted.

**That's enough screwing for now –
time to head out and explore!
Enjoy your SpaceClimb – with best
wishes**

Chris & Flo



Safety Warnings

1. Risk of Life Due to Improper Installation

An incorrect installation of the roof rack system can lead to it becoming loose or detaching during travel, potentially causing serious accidents and injuries. If in doubt, have the installation performed by a professional.

2. Risk of Injury from Heavy Objects

Ensure that the roof rack system's maximum load capacity is observed when loading. Overloading can cause deformation or breakage of the rack, leading to dangerous situations for the driver and other road users.

3. Hazard from Loose Fastening Elements

Check before every journey that all screws and fastening elements are securely tightened. Loose parts can result in the loss of the roof rack system while driving.

4. Caution at High Speeds

Driving with a mounted roof rack system can affect the vehicle's handling, particularly at high speeds, in strong winds, and during cornering. Reduce speed as necessary and drive cautiously.

5. Risk Due to Increased Vehicle Height

Be aware that the mounted roof rack system increases the vehicle's height. Underpasses, garages, and other low-clearance areas may pose a hazard. Always check the clearance height before entering such areas.

6. Risk of Falling During Installation

There is a risk of falling during the installation of the roof rack system, particularly when working at a height or on a ladder. Always use stable ladders and ensure a secure stance to prevent falls and injuries.

7. Slipping Hazard When Wet

In wet or damp conditions, the surface of the roof rack can become slippery, increasing the risk of falling. Proceed cautiously when working in wet weather or on a damp surface, and wear non-slip footwear.

8. Caution: Risk of Injury During Installation

Be mindful of sharp edges and heavy components during installation. Wear protective gloves if necessary and ensure that no parts fall on people or objects.

9. Hazard Due to Product Modifications

Modifications or structural changes to the roof rack system are strictly prohibited. Alterations can compromise the safety and stability of the system and will void any warranty and liability.

Please follow all safety instructions carefully to avoid risks and hazards.

Important Notes

The installation guide serves as a support for the installation of the roof rack system. All steps and instructions have been carefully prepared and reviewed to ensure error-free installation. However, we accept no liability for damages resulting from improper installation, use, or modification of the product. Please observe the following important instructions:

1. Professional Installation

Installation should be carried out by a qualified person or a professional service provider. Improper installation may result in damage to the vehicle, personal injury, or damage to the load.

2. Regular Inspections

Regularly check the fastening elements, especially after long journeys or trips on uneven terrain. Any loose parts must be tightened immediately.

3. Load Limit

Pay attention to the maximum permissible load of the roof rack and the recommendations of the vehicle manufacturer. Overloading may cause damage to the vehicle and the roof rack system.

4. Modifications to the Product

Any modification or alteration to the roof rack system is prohibited and may impair the functionality and safety of the product. In such cases, any warranty or liability from the manufacturer will be void.

5. Disclaimer

The use of the roof rack system is at your own risk. The manufacturer and distributor accept no responsibility for damages or injuries resulting from improper installation, misuse, or failure to comply with safety instructions.

By installing and using this product, you accept the above terms and conditions.